

L70 防缠绕轮

ANTI-WINDING HEAVY DUTY

载重 Load
420-450kg

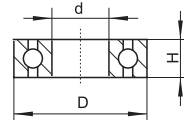


脚架说明 Frame Instruction

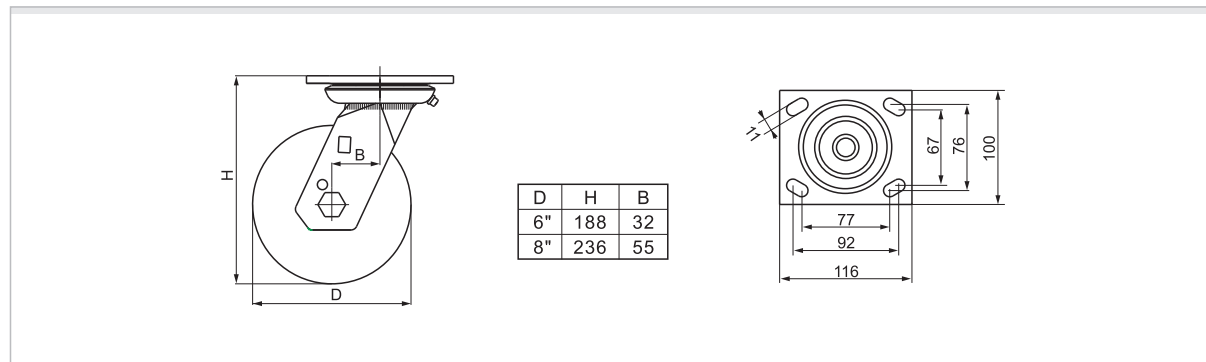
- 材料: 热轧钢板 方板厚: 6mm 支架厚: 6mm
Material: hot-rolled plate Plate thickness: 6mm Bracket thickness: 6mm
- 螺丝孔: $\phi 12\text{mm}$
Screw hole: $\phi 12\text{mm}$
- 支架宽度: 61mm
Bracket width: 61mm

轴承说明 Bearing Instruction

轴承型号 Bearing Type	D	d	H
6203	40	17	12



平顶安装尺寸图 Plate Mounting Instruction



脚架货号说明 Frame Item No. Instruction

规格 Size	定向 Rigid	平顶万向 Plate Swivel					
6"	L70106	L70106					
8"	L70108	L70108					

标配轮子货号说明 Wheel Item No. Instruction

图片 Photo	轮子货号 Wheel item no.	规格 Size					芯子材料 Core	胎面材料 Tread	滚动轴承 Bearing	适用温度 Applicable temperature	胎面硬度 Hardness
	706-26	6"	150		50	61	/	PA 尼龙	双轴承 Double ball bearing 6203	-20°C~120°C	67D
	708-26	8"	200			450					
	706-86T	6"	150		50	61	Cast Iron 铸铁	TPU 高强度聚氨酯	双轴承 Double ball bearing 6203	-20°C~80°C	98A
	708-86T	8"	200			450					
	706-86T	6"	150		50	61	Cast Iron 铸铁	TPU 高强度聚氨酯	双轴承 Double ball bearing 6203	-20°C~80°C	100A
	708-86T	8"	200			450					

W70 耐蒸轮

HI-STEAM HEAVY DUTY

载重 Load
350kg

耐受温度 **200°C**
Withstand 200°C temperature



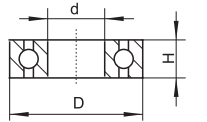
可长时间适用于水高温水蒸汽环境
Capable for long time working in high temperature water and steam

脚架说明 Frame Instruction

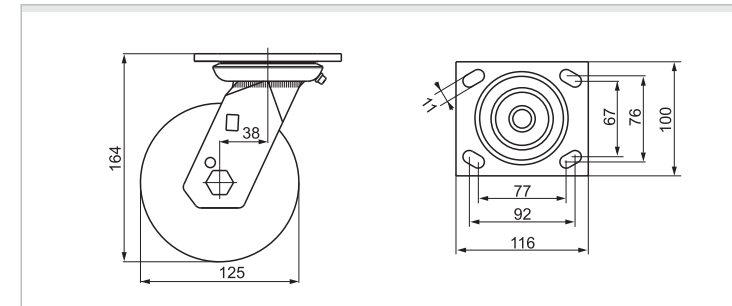
- 材料: 热轧板 / 304不锈钢 方板厚: 6mm 支架厚: 6mm
Material: hot-rolled plate / 304# stainless steel Plate thickness: 6mm Bracket thickness: 6mm
- 螺丝孔: $\phi 12\text{mm}$
Screw hole: $\phi 12\text{mm}$
- 支架宽度: 61mm
Bracket width: 61mm

轴承说明 Bearing Instruction

轴承型号 Bearing Type	D	d	H
6203	40	17	12



平顶安装尺寸图 Plate Mounting Instruction



脚架货号说明 Frame Item No. Instruction

规格 Size	定向 Rigid	平顶方向 Plate Swivel	脚架材质 Frame Material			
5"	W70105	W70115	热轧板 Hot-Rolled Plate			
	W70705	W70715	304不锈钢 304# Stainless Steel			

标配轮子货号说明 Wheel Item No. Instruction

图片 Photo	轮子货号 Wheel item no.	规格 Size					芯子材料 Core	胎面材料 Tread	滚动轴承 Bearing	适用温度 Applicable temperature	胎面硬度 Hardness
	W705-W6	5"	125	50	61	350	/	HP 耐高温	双轴承 Double ball bearing 6203	200°C	67D



H70 耐高温重型 h70

HI-TEMP HEAVY DUTY

载重 Load
180-200kg



脚架说明 Frame Instruction

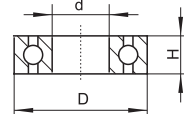
材料: 热轧板 方板厚: 6mm 支架厚: 6mm
Material: hot-rolled plate Plate thickness: 6mm Bracket thickness: 6mm

螺丝孔: $\phi 12\text{mm}$
Screw hole: $\phi 12\text{mm}$

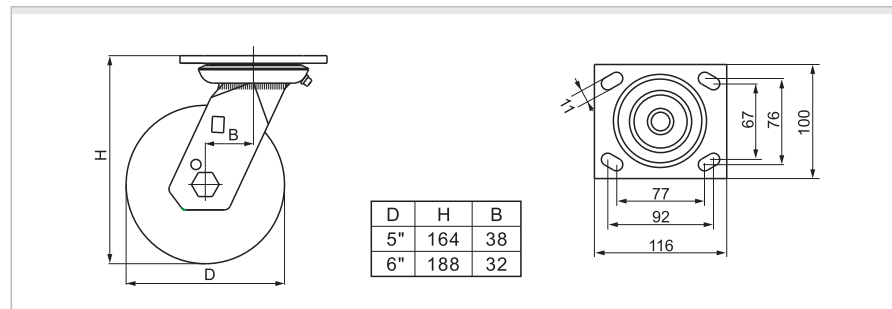
支架宽度: 61mm
Bracket width: 61mm

轴承说明 Bearing Instruction

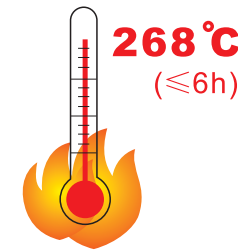
轴承型号 Bearing Type	D	d	H
6203	40	17	12



平顶安装尺寸图 Plate Mounting Instruction



H70脚架货号说明 Frame Item No. Instruction

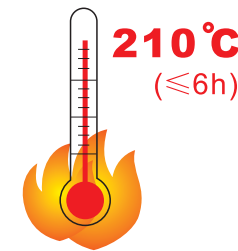


规格 Size	定向 Rigid	平顶万向 Plate Swivel				
5"	H70105	H70115				
6"	H70106	H70116				

H70标配轮子货号说明 Wheel Item No. Instruction

图片 Photo	轮子货号 Wheel item no.	规格 Size				Kg	芯子材料 Core	胎面材料 Tread	滚动轴承 Bearing	适用温度 Applicable temperature	胎面硬度 Hardness
	H705-H6	5"	125			180	/	HP 耐高温	双轴承 Double ball bearing 6203	268°C	67D
	H706-H6	6"	150	50	61	200					

h70脚架货号说明 Frame Item No. Instruction



规格 Size	定向 Rigid	平顶万向 Plate Swivel				
5"	h70105	h70115				
6"	h70106	h70116				

h70标配轮子货号说明 Wheel Item No. Instruction

图片 Photo	轮子货号 Wheel item no.	规格 Size				Kg	芯子材料 Core	胎面材料 Tread	滚动轴承 Bearing	适用温度 Applicable temperature	胎面硬度 Hardness
	h705-h6	5"	125			180	/	HP 耐高温	双轴承 Double ball bearing 6203	210°C	67D
	h706-h6	6"	150	50	61	200					

H50 耐高温中型 h50

HI-TEMP MEDIUM DUTY

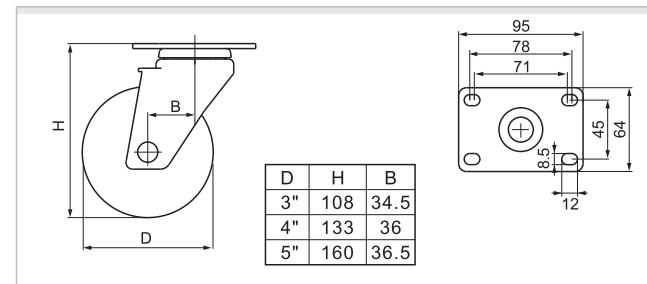
载重 Load
90-120kg



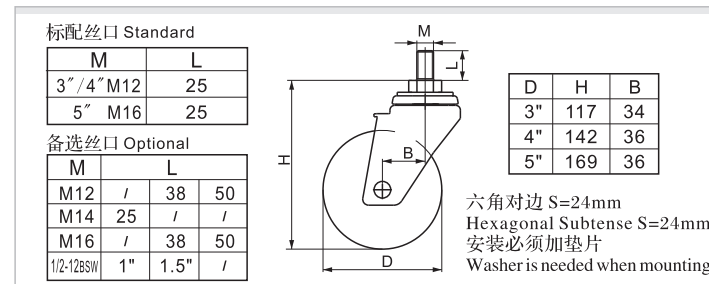
脚架说明 Frame Instruction

- 材料: 冷轧板 方板厚: 4mm 支架厚: 2mm
Material: cold-rolled plate Plate thickness: 4mm Bracket thickness: 2mm
- 螺丝孔: $\phi 3/8$ " Inch
Screw hole: $\phi 3/8$ " Inch
- 支架宽度: 41mm
Bracket width: 41mm

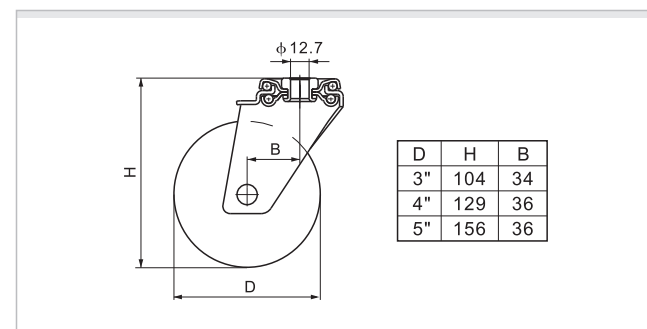
平顶安装尺寸图 Plate Mounting Instruction



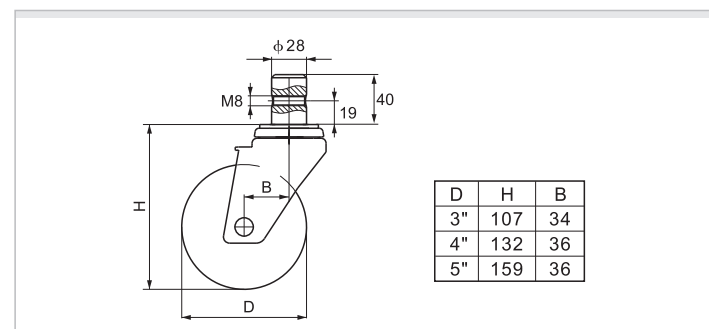
丝口安装尺寸图 Thread Mounting Instruction



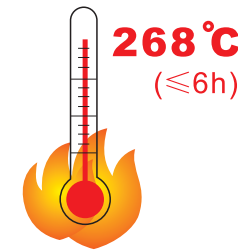
空颈安装尺寸图 Bolt hole Mounting Instruction



插杆安装尺寸图 Stem Mounting Instruction



H50脚架货号说明 Frame Item No. Instruction

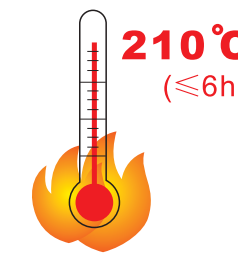


规格 Size	定向 Rigid	平顶万向 Plate Swivel	丝口万向 Threaded Swivel	插杆万向 Stem Swivel	
3"	H50103	H50113	H50133	H50153	
4"	H50104	H50114	H50134	H50154	
5"	H50105	H50115	H50135	H50155	

H50标配轮子货号说明 Wheel Item No. Instruction

图片 Photo	轮子货号 Wheel item no.	规格 Size					芯子材料 Core	胎面材料 Tread	滚动轴承 Bearing	适用温度 Applicable temperature	胎面硬度 Hardness
	H503-H4	3"	75			90		HP 耐高温	滚轴 Sleeve	268°C	67D
	H504-H4	4"	100	30	41	100	/				
	H505-H4	5"	125			120					

h50脚架货号说明 Frame Item No. Instruction



规格 Size	定向 Rigid	平顶万向 Plate Swivel	丝口万向 Threaded Swivel	插杆万向 Stem Swivel	空颈万向 Bolt Hole Swivel	
3"	h50103	h50113	h50133	h50153	h50173	
4"	h50104	h50114	h50134	h50154	h50174	
5"	h50105	h50115	h50135	h50155	h50175	

h50标配轮子货号说明 Wheel Item No. Instruction

图片 Photo	轮子货号 Wheel item no.	规格 Size					芯子材料 Core	胎面材料 Tread	滚动轴承 Bearing	适用温度 Applicable temperature	胎面硬度 Hardness
	h503-h4	3"	75			90		HP 耐高温	滚轴 Sleeve	210°C	67D
	h504-h4	4"	100	30	41	100	/				
	h505-h4	5"	125			120					

M31 设备脚轮低重心

LOW GRAVITY MACHINE









脚架说明 Frame Instruction

-  材料: 冷轧板 方板厚: 2mm 支架厚: 2mm
Material: cold-rolled plate Plate thickness: 2mm Bracket thickness: 2mm
-  螺丝孔: $\phi 8$ mm
Screw hole: $\phi 8$ mm
-  支架宽度: 41mm
Bracket width: 41mm

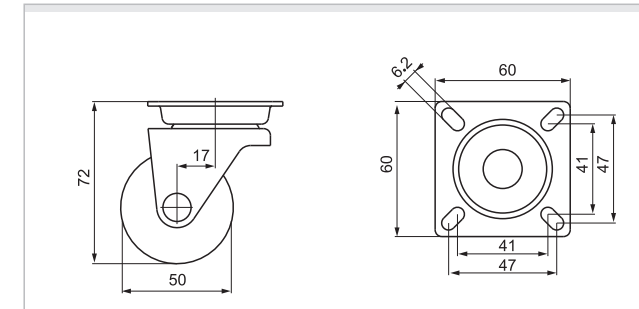
脚架货号说明 Frame Item No. Instruction

规格 Size	平顶万向 Plate Swivel	平顶刹车 Plate Brake	丝口万向 Threaded Swivel	丝口刹车 Threaded Brake	空颈万向 Bolt Hole Swivel	空颈刹车 Bolt Hole Brake	刹车示意图 Brake Instruction
2"	M31112	M31122	M31132	M31142	M31172	M31182	 H-塑双刹 Plastic Dual Brake

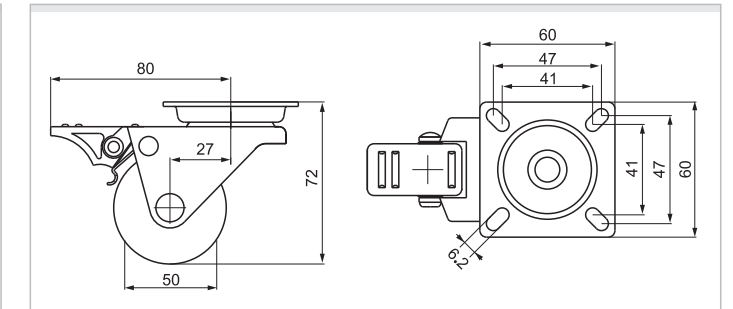
标配轮子货号说明 Wheel Item No. Instruction

图片 Photo	轮子货号 Wheel item no.	规格 Size					芯子材料 Core	胎面材料 Tread	滚动轴承 Bearing	适用温度 Applicable temperature	胎面硬度 Hardness
	M312-04	2"	50	30	41	80	/	PO 聚炳炔	滚轴 Sleeve	-20°C~120°C	67D
	M312-13	2"	50	2-16	41	80	/	PA 尼龙	螺轴 Bolt	-20°C~100°C	67D

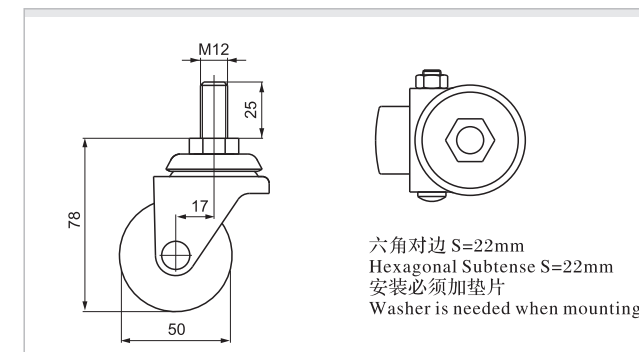
平顶万向安装尺寸图 Plate Swivel Mounting Instruction



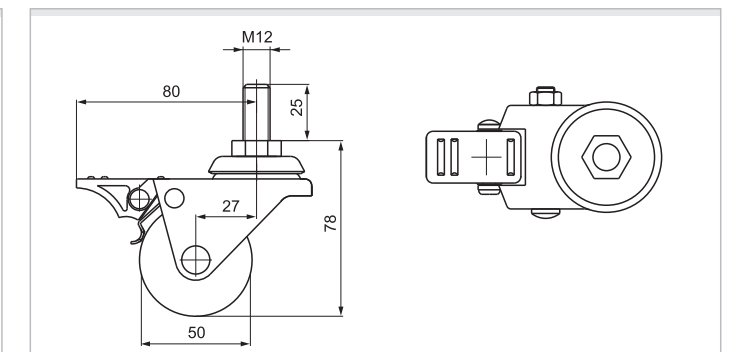
平顶刹车安装尺寸图 Plate Brake Mounting Instruction



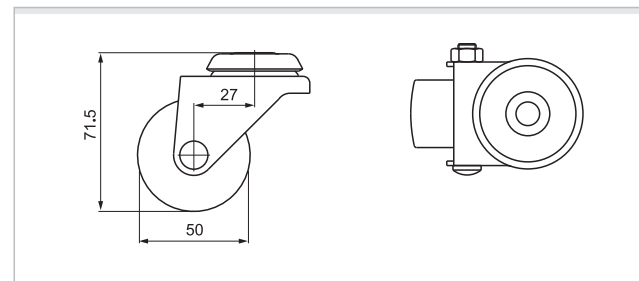
丝口万向安装尺寸图 Threaded Swivel Mounting Instruction



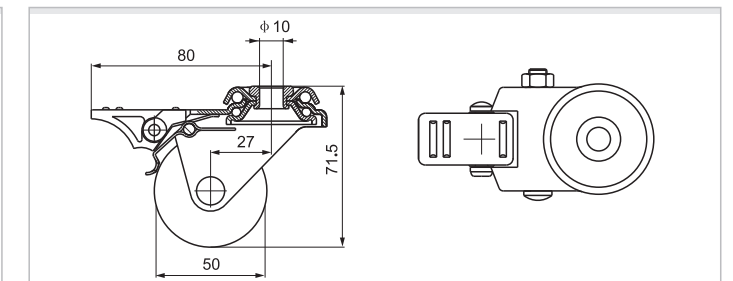
丝口刹车安装尺寸图 Threaded Brake Mounting Instruction



空颈万向安装尺寸图 Bolt hole Swivel Mounting Instruction



空颈刹车安装尺寸图 Bolt hole Brake Mounting Instruction



M61 设备脚轮 低重心

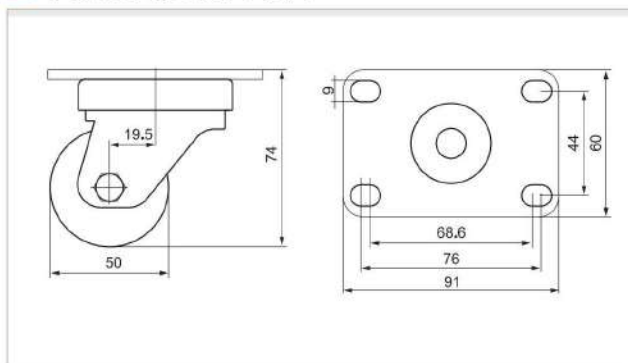
LOW GRAVITY MACHINE



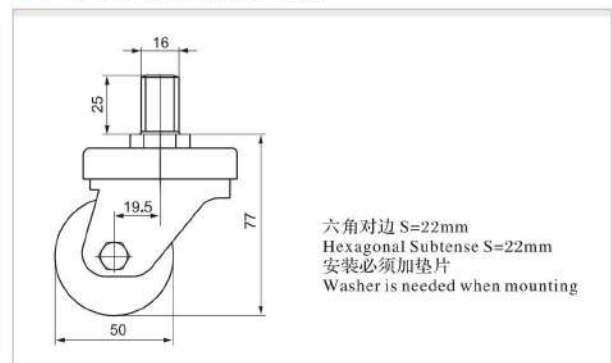
脚架说明 Frame Instruction

-  材料: 热轧板 方板厚: 4mm 支架厚: 2.5mm
Material: hot-rolled plate Plate thickness: 4mm Bracket thickness: 2.5mm
-  螺丝孔: $\phi 8\text{mm}$
Screw hole: $\phi 8\text{mm}$
-  支架宽度: 51mm
Bracket width: 51mm

平顶万向安装尺寸图 Plate Swivel Mounting Instruction



丝口万向安装尺寸图 Thread Swivel Mounting Instruction



脚架货号说明 Frame Item No. Instruction

规格 Size	平顶万向 Plate Swivel	丝口万向 Threaded Swivel				
2"	M61112	M61132				

标配轮子货号说明 Wheel Item No. Instruction

图片 Photo	轮子货号 Wheel item no.	规格 Size					芯子材料 Core	胎面材料 Tread	滚动轴承 Bearing	适用温度 Applicable temperature	胎面硬度 Hardness
	M612-13	2"	50	2-20	51	180	/	PA 尼龙	螺轴 Bolt	-20°C~120°C	67D

M72 设备脚轮低重心

LOW GRAVITY MACHINE

载重 Load
280-320kg

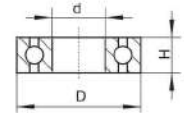


脚架说明 Frame Instruction

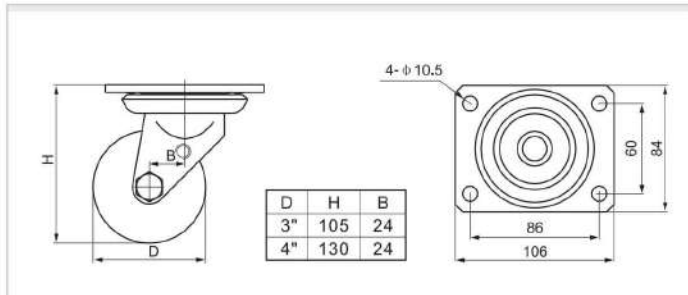
-  材料: 热轧板 方板厚: 5mm 支架厚: 5mm
Material: hot-rolled plate Plate thickness: 5mm Bracket thickness: 5mm
-  螺丝孔: $\phi 12\text{mm}$
Screw hole: $\phi 12\text{mm}$
-  支架宽度: 52mm
Bracket width: 52mm

轴承说明 Bearing Instruction

轴承型号 Bearing Type	D	d	H
6203	40	17	12



平顶万向安装尺寸图 Plate Swivel Mounting Instruction



脚架货号说明 Frame Item No. Instruction

规格 Size	定向 Rigid	平顶万向 Plate Swivel			
3"	M72103	M72113			
4"	M72104	M72114			

标配轮子货号说明 Wheel Item No. Instruction

图片 Photo	轮子货号 Wheel item no.	规格 Size				 Kg	芯子材料 Core	胎面材料 Tread	滚动轴承 Bearing	适用温度 Applicable temperature	胎面硬度 Hardness
	M723-16	3"	75			280	/	PA 尼龙	双轴承 Double ball bearing 6203	-20°C~120°C	67D
	M724-16	4"	100	50	52	320					

E37 面包轮

MEDICAL USING LIGHT DUTY

载重 Load
70-80kg

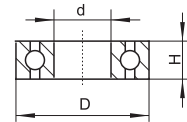


脚架说明 Frame Instruction

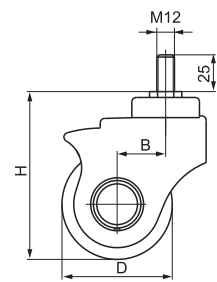
- 材料: 冷轧板 支架厚: 2mm
Material: cold-rolled plate Bracket thickness: 2mm
- 螺丝孔: $\phi 8$ mm
Screw hole: $\phi 8$ mm
- 支架宽度: 33mm
Bracket width: 33mm

轴承说明 Bearing Instruction

轴承型号 Bearing Type	D	d	H
6001	28	12	8



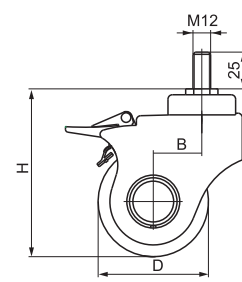
丝口万向安装尺寸图 Threaded Swivel Mounting Instruction



D	H	B
3"	115	33
4"	140.5	27

六角对边 S=19mm
Hexagonal Subtense S=19mm
安装必须加垫片
Washer is needed when mounting

丝口刹车安装尺寸图 Threaded Brake Mounting Instruction



D	H	B
3"	115	33.5
4"	140.5	27.5

脚架货号说明 Frame Item No. Instruction

规格 Size	丝口万向 Threaded Swivel	丝口刹车 Threaded Brake					刹车示意图 Brake Instruction
3"	E3733	E3743					 H-塑双刹 Plastic Dual Brake
4"	E3734	E3744					

标配轮子货号说明 Wheel Item No. Instruction

图片 Photo	轮子货号 Wheel item no.	规格 Size					芯子材料 Core	胎面材料 Tread	滚动轴承 Bearing	适用温度 Applicable temperature	胎面硬度 Hardness
	373-57	3"	75	25	33	70	PP 聚丙烯	TPE 超级人造胶	单轴承 Single ball bearing 6001	-30°C~70°C	65A
	374-57	4"	100								
	373-77	3"	75	25	33	80	PP 聚丙烯	PU 聚氨酯	单轴承 Single ball bearing 6001	-20°C~80°C	95A
	374-77	4"	100								

E57 面包轮

MEDICAL USING MEDIUM DUTY

载重 Load
110-130kg



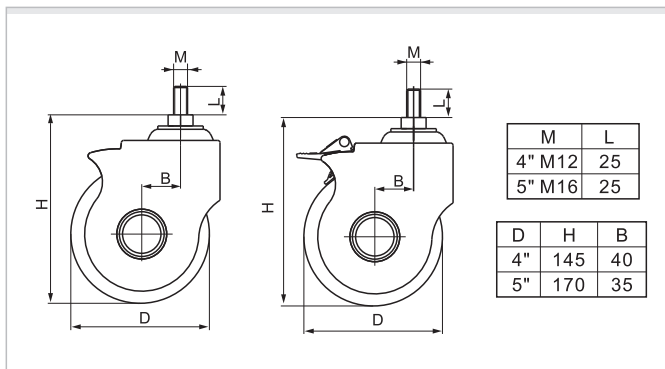
脚架说明 Frame Instruction

- 材料: 冷轧板 支架厚: 2.5mm
Material: cold-rolled plate Bracket thickness: 2mm
- 螺丝孔: $\phi 3/8$ " Inch
Screw hole: $\phi 3/8$ " Inch
- 支架宽度: 41mm
Bracket width: 41mm

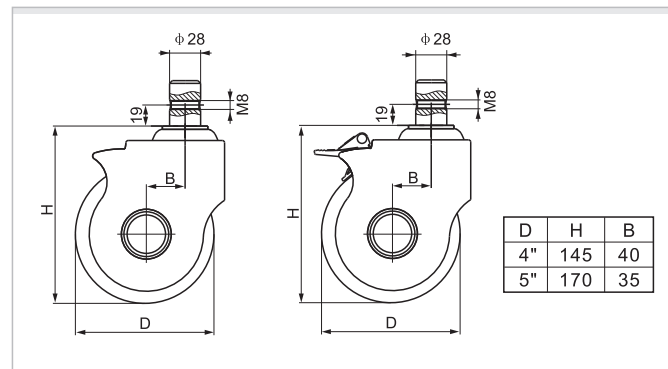
轴承说明 Bearing Instruction

轴承型号 Bearing Type	D	d	H
6002	32	15	9

丝口安装尺寸图 Thread Mounting Instruction



插杆安装尺寸图 Stem Mounting Instruction



脚架货号说明 Frame Item No. Instruction

规格 Size	丝口万向 Threaded Swivel	丝口刹车 Threaded Brake	插杆万向 Stem Swivel	插杆刹车 Stem Brake	刹车示意图 Brake Instruction			
4"	E5734	E5744	E5754	E5764	 H-塑双刹 Plastic Dual Brake			
5"	E5735	E5745	E5755	E5765				

标配轮子货号说明 Wheel Item No. Instruction

图片 Photo	轮子货号 Wheel item no.	规格 Size					芯子材料 Core	胎面材料 Tread	滚动轴承 Bearing	适用温度 Applicable temperature	胎面硬度 Hardness
	574-57	4"	100	32	41	110	PP 聚丙烯	TPE 超级人造胶	单轴承 Single ball bearing 6002	-30°C~70°C	65A
	575-57	5"	125								
	574-77	4"	100	32	41	130	PP 聚丙烯	PU 聚氨酯	单轴承 Single ball bearing 6002	-20°C~80°C	95A
	575-77	5"	125								

S71 不锈钢重型

STAINLESS STEEL HEAVY DUTY

载重 Load
380-450kg

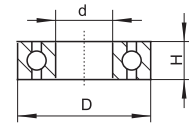


脚架说明 Frame Instruction

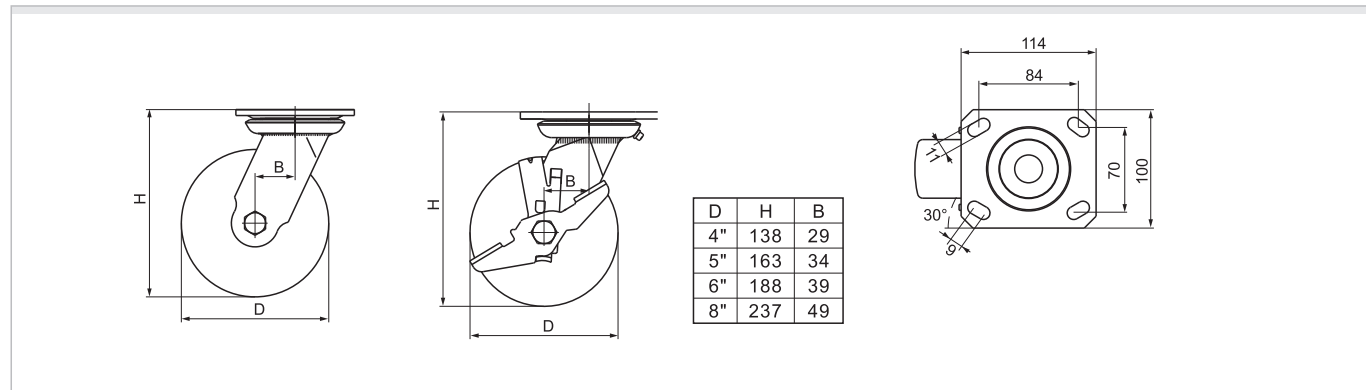
- 材料: 不锈钢304 方板厚: 5mm 支架厚: 5mm
Material: 304# stainless steel Plate thickness: 5mm Bracket thickness: 5mm
- 螺丝孔: $\phi 12\text{mm}$
Screw hole: $\phi 12\text{mm}$
- 支架宽度: 61mm
Bracket width: 61mm

轴承说明 Bearing Instruction


轴承型号 Bearing Type	材质 Material	D	d	H
6203	SUS 440C	40	17	12






平顶安装尺寸图 Plate Mounting Instruction



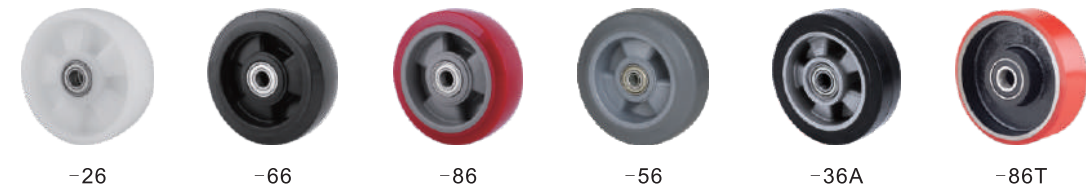
脚架货号说明 Frame Item No. Instruction

规格 Size	定向 Rigid	平顶万向 Plate Swivel	平顶刹车 Plate Brake						刹车示意图 Brake Instruction	
4"	S71704	S71714	S71724							 C-侧轮刹 Side Wheel Brake
5"	S71705	S71715	S71725							
6"	S71706	S71716	S71726							
8"	S71708	S71718	S71728							

标配轮子货号说明 Wheel Item No. Instruction

图片 Photo	轮子货号 Wheel item no.	规格 Size	100	125	150	200	重量 Kg	芯子材料 Core	胎面材料 Tread	滚动轴承 Bearing	适用温度 Applicable temperature	胎面硬度 Hardness
	S704-25	4"	100				380	/	PA 尼龙	特尔灵 Derlin	-20°C~120°C	67D
	S705-25	5"	125	50	61	400						
	S706-25	6"	150			420						
	S708-25	8"	200			450						
	S704-65	4"	100				320	PP 聚丙烯	PU 聚氨酯	特尔灵 Derlin	-20°C~80°C	95A
	S705-65	5"	125	50	61	350						
	S706-65	6"	150			380						
	S708-65	8"	200			420						
	S704-85	4"	100				350	PP 聚丙烯	TPU 高强度聚氨酯	特尔灵 Derlin	-20°C~80°C	98A
	S705-85	5"	125	50	61	380						
	S706-85	6"	150			420						
	S708-85	8"	200			450						

可选配双轴承轮子 Optional: Double Ball Bearing Wheels



*All metal accessories are made of stainless steel.

S34 不锈钢轻型

STAINLESS STEEL LIGHT DUTY

载重 Load
70-90kg



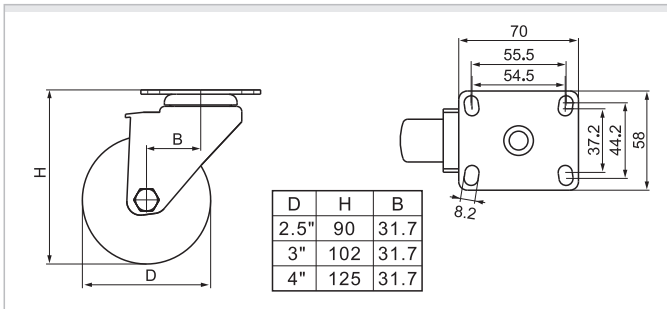
脚架说明 Frame Instruction

- 材料: 不锈钢304 方板厚: 2.5mm 支架厚: 2mm
Material: 304# stainless steel Plate thickness: 2.5mm Bracket thickness: 2mm
- 螺丝孔: $\phi 8$ mm
Screw hole: $\phi 8$ mm
- 支架宽度: 33mm
Bracket width: 33mm

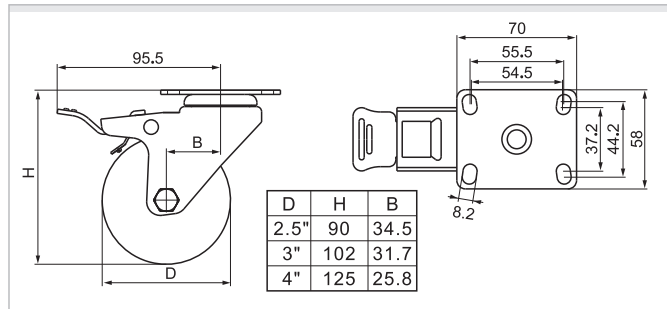
轴承说明 Bearing Instruction

轴承型号 Bearing Type	材质 Material	D	d	H
6000	SUS 440C	26	10	8

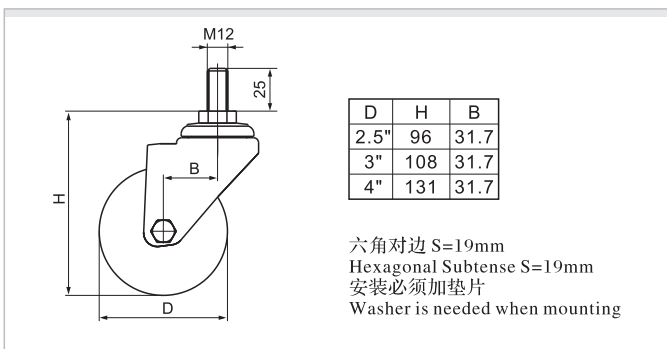
平顶万向安装尺寸图 Plate Swivel Mounting Instruction



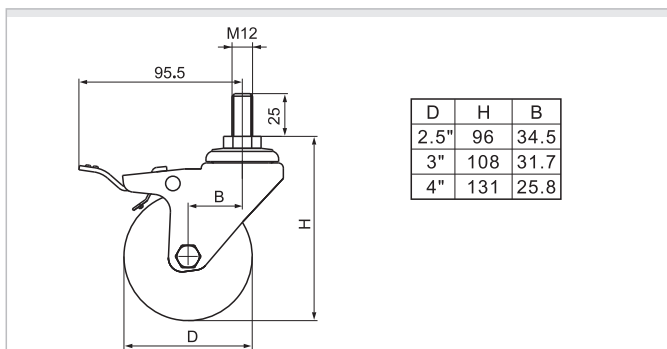
平顶刹车安装尺寸图 Plate Brake Mounting Instruction



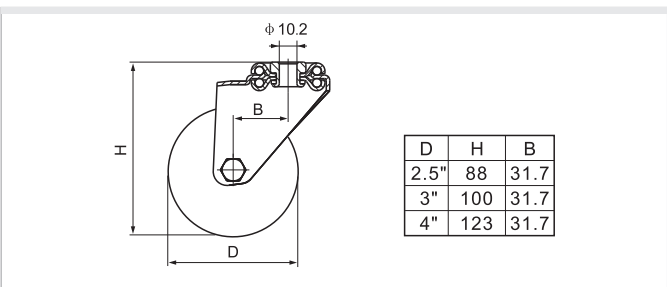
丝口万向安装尺寸图 Threaded Swivel Mounting Instruction



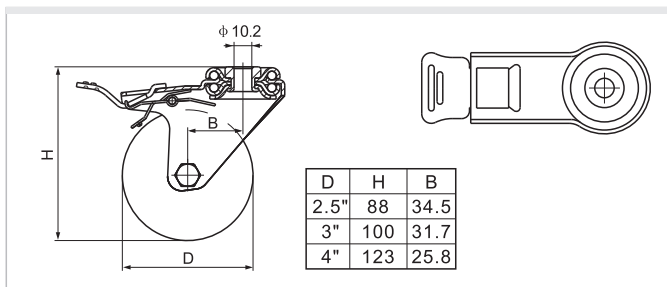
丝口刹车安装尺寸图 Threaded Brake Mounting Instruction



空颈万向安装尺寸图 Bolt hole Swivel Mounting Instruction



空颈刹车安装尺寸图 Bolt hole Brake Mounting Instruction



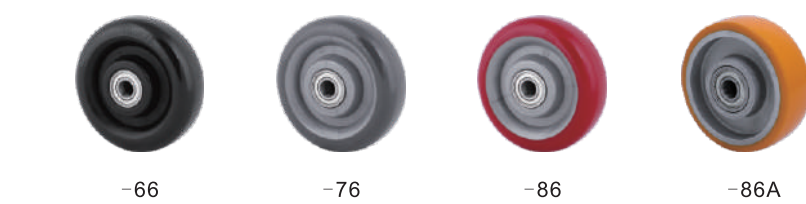
脚架货号说明 Frame Item No. Instruction

规格 Size	定向 Rigid	平顶万向 Plate Swivel	平顶刹车 Plate Brake	丝口万向 Threaded Swivel	丝口刹车 Threaded Brake	空颈万向 Bolt Hole Swivel	空颈刹车 Bolt Hole Brake	刹车示意图 Brake Instruction
2.5"	S347025	S347125	S347225	S347325	S347425	S347725	S347825	 L-铁双刹 Iron Dual Brake
3"	S34703	S34713	S34723	S34733	S34743	S34773	S34783	
4"	S34704	S34714	S34724	S34734	S34744	S34774	S34784	

标配轮子货号说明 Wheel Item No. Instruction

图片 Photo	轮子货号 Wheel item no.	规格 Size	芯子材料 Core	胎面材料 Tread	滚动轴承 Bearing	适用温度 Applicable temperature	胎面硬度 Hardness
	S3325-03	2.5"	63	/	PO 聚烯烃	-20°C~80°C	67D
	S333-03	3"	75				
	S334-03	4"	100				
	S3325-23	2.5"	63	PA 尼龙	螺栓 Bolt	-20°C~120°C	67D
	S333-23	3"	75				
	S334-23	4"	100				
	S3625-64	2.5"	63	PP 聚丙烯	PU 聚氨酯	-20°C~80°C	95A
	S363-64	3"	75				
	S364-64	4"	100				
	S3625-74	2.5"	63	PP 聚丙烯	PU 聚氨酯	-20°C~80°C	95A
	S363-74	3"	75				
	S364-74	4"	100				
	S3625-84	2.5"	63	PP 聚丙烯	TPU 高强度聚氨酯	-20°C~80°C	95A
	S363-84	3"	75				
	S364-84	4"	100				

可选配双轴承轮子 Optional: Double Ball Bearing Wheels



*All metal accessories are made of stainless steel.

S54 不锈钢中型

STAINLESS STEEL MEDIUM DUTY

载重 Load
130-150kg

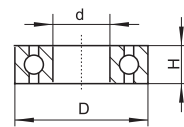


脚架说明 Frame Instruction

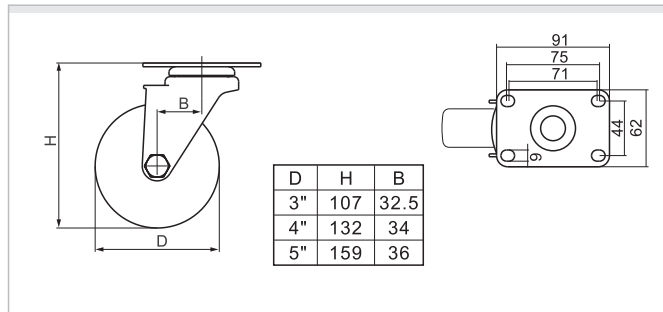
- 材料: 不锈钢304 方板厚: 3mm 支架厚: 2mm
Material: 304# stainless steel Plate thickness: 3mm Bracket thickness: 2mm
- 螺丝孔: $\phi 8$ mm
Screw hole: $\phi 8$ mm
- 支架宽度: 41mm
Bracket width: 33mm

轴承说明 Bearing Instruction

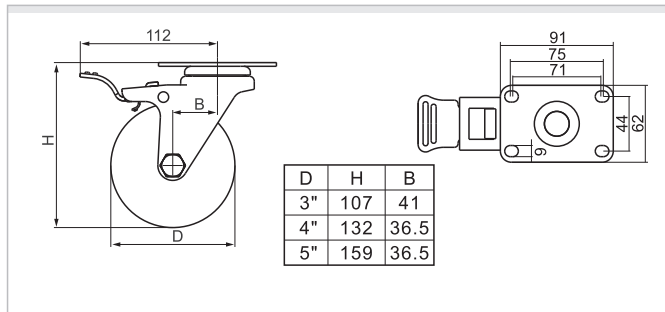
轴承型号 Bearing Type	材质 Material	D	d	H
6001	SUS 440C	28	12	8



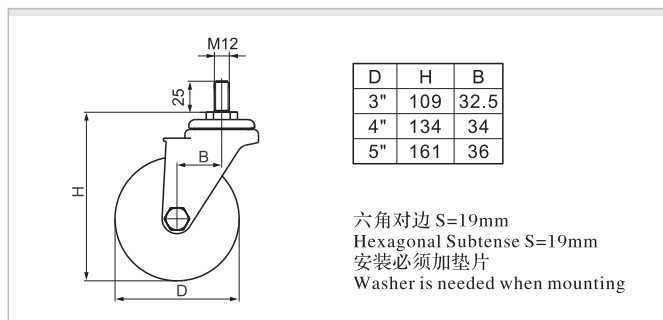
平顶万向安装尺寸图 Plate Swivel Mounting Instruction



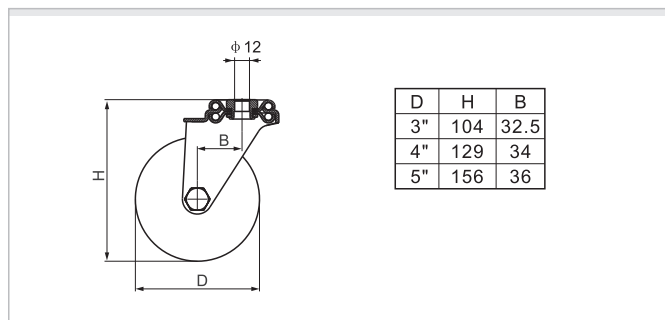
平顶刹车安装尺寸图 Plate Brake Mounting Instruction



丝口万向安装尺寸图 Threaded Swivel Mounting Instruction



空颈万向安装尺寸图 Bolt hole Swivel Mounting Instruction



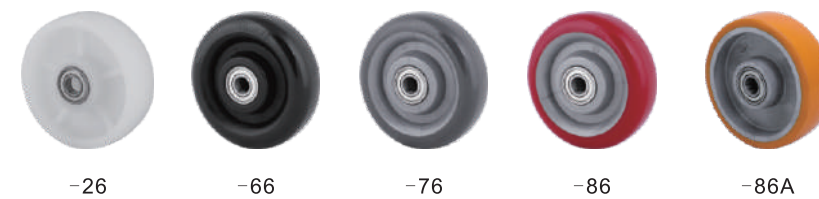
脚架货号说明 Frame Item No. Instruction

规格 Size	定向 Rigid	平顶万向 Plate Swivel	平顶刹车 Plate Brake	丝口万向 Threaded Swivel	丝口刹车 Threaded Brake	空颈万向 Bolt Hole Swivel	空颈刹车 Bolt Hole Brake	刹车示意图 Brake Instruction
3"	S54703	S54713	S54723	S54733	S54743	S54773	S54783	 L-铁双刹 Iron Dual Brake
4"	S54704	S54714	S54724	S54734	S54744	S54774	S54784	
5"	S54705	S54715	S54725	S54735	S54745	S54775	S54785	

标配轮子货号说明 Wheel Item No. Instruction

图片 Photo	轮子货号 Wheel item no.	规格 Size					芯子材料 Core	胎面材料 Tread	滚动轴承 Bearing	适用温度 Applicable temperature	胎面硬度 Hardness
	S503-25	3"	75	32	41	150	/	PA 尼龙	特尔灵 Derlin	-20°C~120°C	67D
	S504-25	4"	100								
	S505-25	5"	125								
	S503-65	3"	75	32	41	140	PP 聚丙烯	PU 聚氨酯	特尔灵 Derlin	-20°C~80°C	95A
	S504-65	4"	100								
	S505-65	5"	125								
	S503-75	3"	75	32	41	150	PP 聚丙烯	PU 聚氨酯	特尔灵 Derlin	-20°C~80°C	95A
	S504-75	4"	100								
	S505-75	5"	125								
	S503-85	3"	75	32	41	150	PP 聚丙烯	TPU 高强度聚氨酯	特尔灵 Derlin	-20°C~80°C	95A
	S504-85	4"	100								
	S505-85	5"	125								

可选配双轴承轮子 Optional: Double Ball Bearing Wheels



*All metal accessories are made of stainless steel.

S26 不锈钢小型

STAINLESS STEEL MINI DUTY

载重 Load
35-50kg

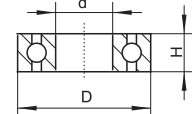


脚架说明 Frame Instruction

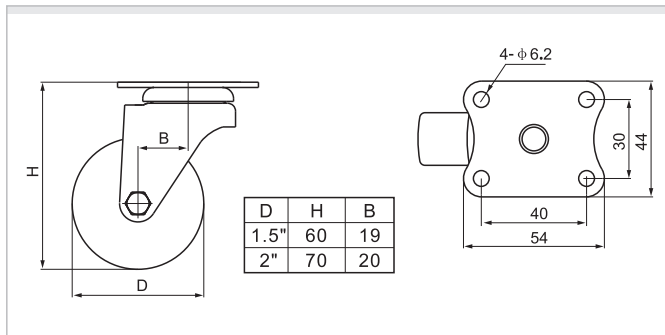
- 材料: 不锈钢304 方板厚: 2mm 支架厚: 2mm
Material: 304# stainless steel Plate thickness: 2mm Bracket thickness: 2mm
- 螺丝孔: $\phi 6$ mm
Screw hole: $\phi 6$ mm
- 支架宽度: 25mm
Bracket width: 25mm

轴承说明 Bearing Instruction

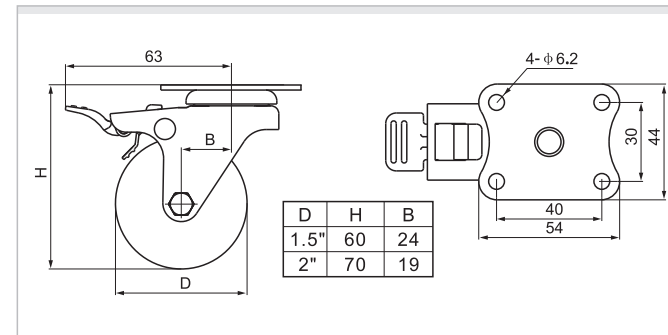
轴承型号 Bearing Type	材质 Material	D	d	H
608	SUS 440C	22	8	7



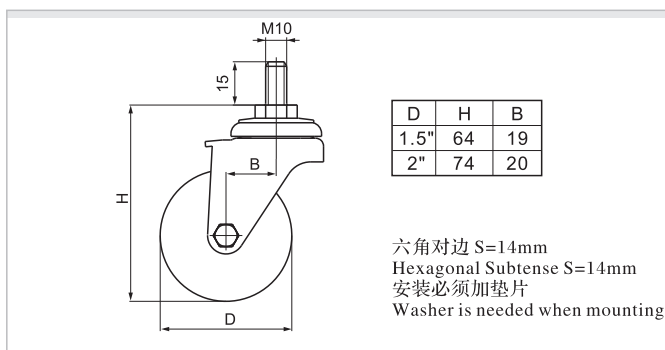
平顶万向安装尺寸图 Plate Swivel Mounting Instruction



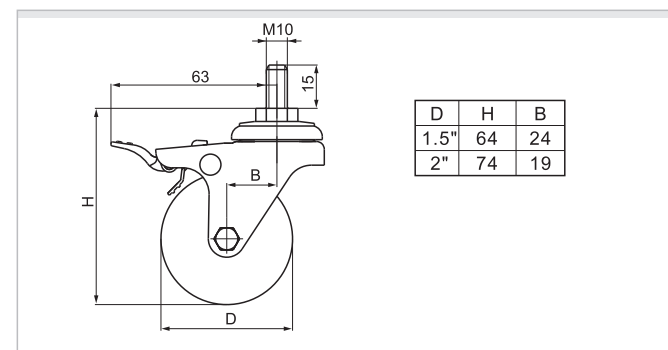
平顶刹车安装尺寸图 Plate Brake Mounting Instruction



丝口万向安装尺寸图 Threaded Swivel Mounting Instruction



丝口刹车安装尺寸图 Threaded Brake Mounting Instruction



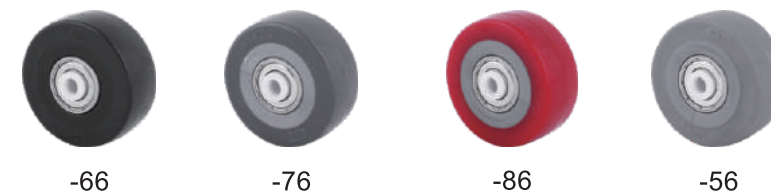
脚架货号说明 Frame Item No. Instruction

规格 Size	定向 Rigid	平顶万向 Plate Swivel	平顶刹车 Plate Brake	丝口万向 Threaded Swivel	丝口刹车 Threaded Brake			刹车示意图 Brake Instruction
1.5"	S267015	S267115	S267215	S267315	S267415			 H-塑双刹 Plastic Dual Brake
2"	S26702	S26712	S26722	S26732	S26742			

标配轮子货号说明 Wheel Item No. Instruction

图片 Photo	轮子货号 Wheel item no.	规格 Size				Kg	芯子材料 Core	胎面材料 Tread	滚动轴承 Bearing	适用温度 Applicable temperature	胎面硬度 Hardness
	S2615-03	1.5"	38	20	25	45	/	PA 尼龙	螺轴 Bolt	-20°C~80°C	67D
	S262-03	2"	50			50					
	S2615-23	1.5"	38	20	25	45	/	PA 尼龙	螺轴 Bolt	-20°C~120°C	67D
	S262-23	2"	50			50					
	S2615-53	1.5"	38	20	25	45	PP 聚丙烯	TPE 超级人造胶	螺轴 Bolt	-30°C~70°C	65A
	S262-53	2"	50			50					
	S2615-73	1.5"	38	20	25	35	PP 聚丙烯	PU 聚氨酯	螺轴 Bolt	-20°C~80°C	95A
	S262-73	2"	50			40					

可选配双轴承轮子 Optional: Double Ball Bearing Wheels



*All metal accessories are made of stainless steel.